



TERRITORIAL MUSIC INSTITUTE

The Salvation Army, USA Southern Territory

July 22 - 29, 2024

PURSUE
T M I 2 0 2 4

BRASS BAND MAJOR AUDITIONS

BRASS – Bass Trombone

All Brass Band Majors must complete both a **choral audition** (for placement in one of the four choruses) and an **instrumental audition** (for placement in one of the four bands). *Note: delegates who sign up for a Leadership Elective (Creative Arts, Instrumental, or Worship Team) will not be in a chorus and will not need to audition.*

All Auditions will be completed on the first day of TMI. You will be assigned times when you check in. Please read the audition instructions carefully and **practice everything before you arrive!**

INSTRUCTIONS: Brass Audition

Practice all scales, as you are able. You may be asked to play 2-3 scales during your audition. Each of the excerpts included in the brass audition music is progressively harder than the one before. Please prepare as many as possible to the best of your ability.

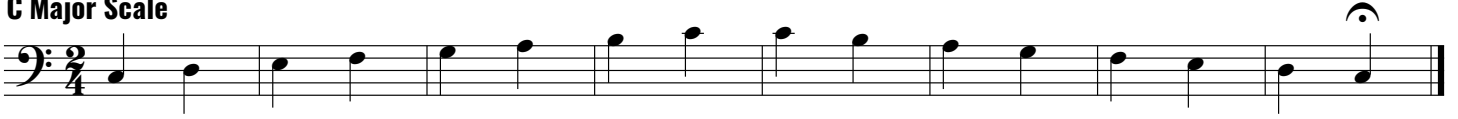
Auditions will consist of the following:

- Scales (see next page)
- Excerpts (from this packet)
- Sight-reading

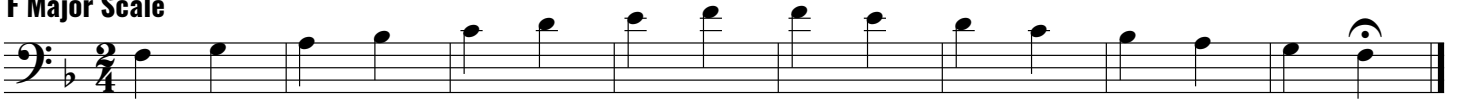
Major Scales

Bass Clef

C Major Scale



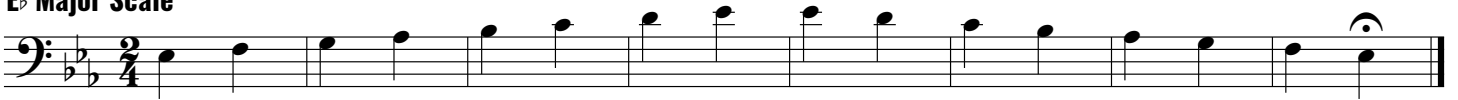
F Major Scale



Bb Major Scale



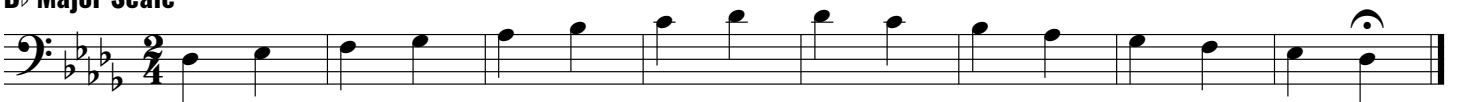
Eb Major Scale



Ab Major Scale



Db Major Scale



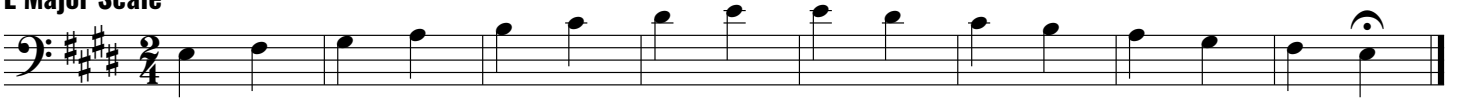
Gb Major Scale



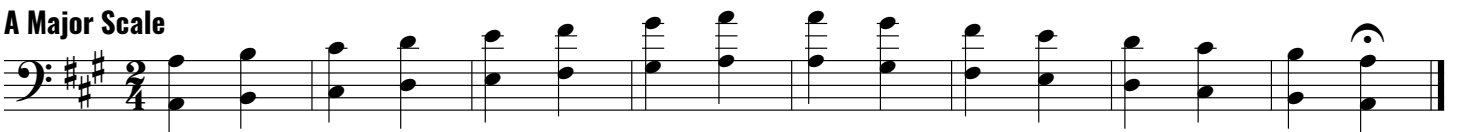
B Major Scale



E Major Scale



A Major Scale



D Major Scale



G Major Scale



TMI Audition Music
Brass B.C.

① Andante ♩ = 76

Two staves of music in bass clef, 4/4 time signature. The first staff begins with a dynamic marking of *mp* and ends with a *cresc.* marking. The second staff continues the melody. Slurs are present under the first and second measures of the second staff.

② Tempo di Valse $\text{♩} = 60$

Three staves of music in bass clef, 3/4 time signature. The first staff begins with a dynamic marking of *p* and the instruction *Dolce*. The second and third staves continue the piece. A *mf* dynamic marking appears at the end of the third staff. Slurs are used throughout the piece.

③ Allegretto (♩ = 76-104)

Two staves of music in bass clef, 6/8 time signature. The first staff begins with a dynamic marking of *mf* and the instruction *Detached*. The second staff continues the piece. A *p* dynamic marking is at the start of the second staff, and a *f* dynamic marking is at the end of the second staff. Slurs are used throughout.

④ Leggiero (♩ = 72-112)

Three staves of music in bass clef, 4/4 time signature. The first staff begins with a dynamic marking of *pp*. The second and third staves continue the piece. Dynamic markings *ff*, *p*, *mf*, *f*, and *ff* are placed below the staves. Slurs are used throughout.

⑤

Adagio ♩ = 63 *Molto cantabile più animato*

⑥

Marcato ♩ = 88-112

⑦

Maestoso ♩ = 80-100

⑧

Vivace ♩ = 92-144

Choral Audition

About the Choruses

TMI delegates will sing in one of the following four choruses at TMI:

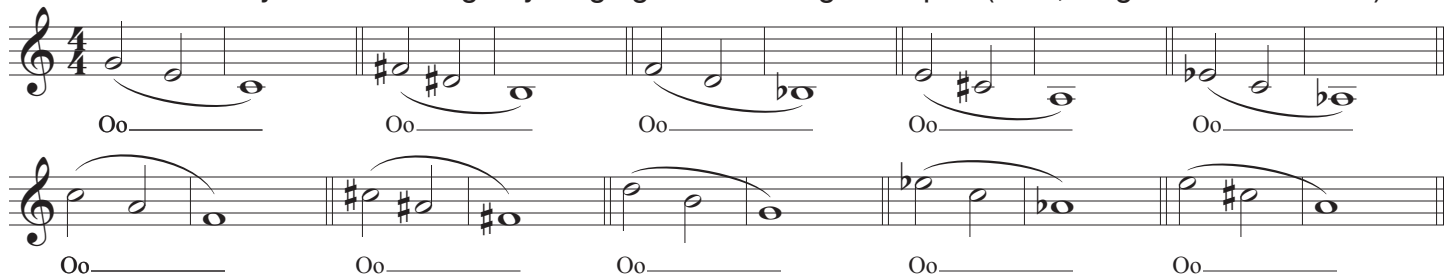
- Ditmer Chorus (introductory male chorus)
- Kellner Chorus (introductory female chorus)
- Cox Chorus (intermediate SATB chorus)
- TMI Chorus (advanced SATB chorus)

Audition Notes

1. Those who were in the TMI Chorus last year will be automatically assigned to the same chorus and will not need to audition again this year.
2. You may elect to skip Part 3 of this audition, but doing so will result in automatic placement in one of the two introductory choruses (Ditmer or Kellner). We encourage everyone to audition for the SATB choruses, even if it is a challenge for you.

① Range Check

Demonstrate your vocal range by singing the following excerpts. (Men, sing an octave lower.)



Two staves of musical notation in 4/4 time. The first staff contains five measures of music with notes on a whole staff. The second staff contains five measures of music with notes on a half staff. Each measure is preceded by a vocal line 'Oo' with a horizontal line underneath it, indicating the starting point for the vocal range check.

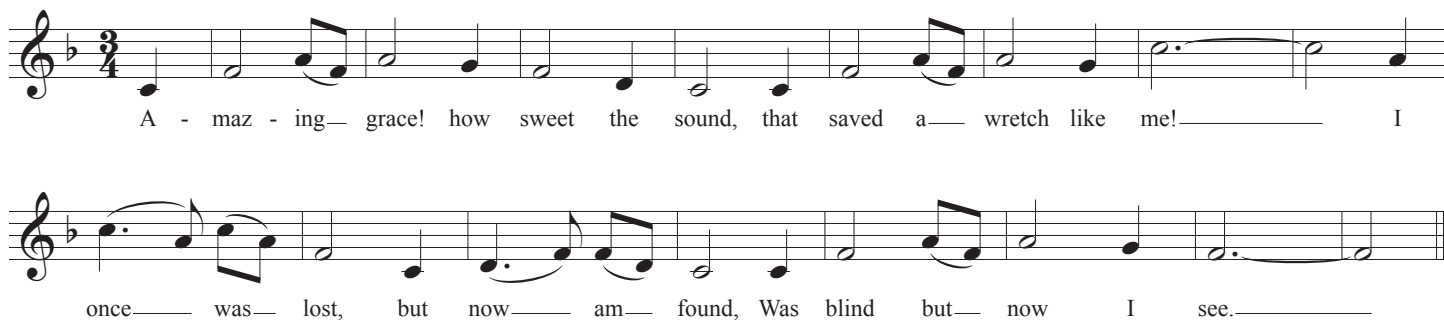
② Melody Singing

Sing one verse of this melody. (Men, sing an octave lower.)

Words: John Newton

AMAZING GRACE

Music: American Traditional



Musical notation for the hymn 'Amazing Grace' in 3/4 time. The first staff shows the melody with lyrics: 'A - maz - ing— grace! how sweet the sound, that saved a— wretch like me! I'. The second staff continues the melody with lyrics: 'once— was— lost, but now— am— found, Was blind but— now I see.' The music is written on a single staff with a treble clef and a key signature of one flat.

The remaining portion is for those auditioning for one of the SATB choirs. If you have chosen to be automatically placed in the male or female chorus, you will end your audition here.

③ Sight-Singing

You may be asked to sight-sing 1-2 short excerpts.

Choral Audition

4 Part Singing

Practice your part to this song and be prepared to sing it with piano.

Words: Fanny J. Crosby

PRAISE THE LORD!

Music: Philip B. Catelinet

Allegro (♩ = 108)

To God be the glo - ry! great things He hath done: So loved He the
world that He gave us His Son; Who yield - ed His life an at -
one - ment for sin, And op - ened the Life - gate that all may go
in. Praise the Lord! Praise the Lord! Let the earth hear His voice! Praise the
Lord! Praise the Lord! Let the peo - ple re - jice. O, come to the Fa - ther through
Je - sus the Son; And give Him the glo - ry! Great things He hath done.